

May 2025

# WHAT'S NEW?

**Nutrien**  
Ag Solutions®

FAWCETT LIVESTOCK

Nutrien Fawcett Livestock—Mt Pleasant Update

## KEY DATES:

### MARKETS:

#### **\*\*DOLLY'S DREAM FUNDRAISER MARKET\*\***



**May:** 8th  
**May:** 22nd - Cancelled  
**June:** 12th

### CLEARING SALES:

More information on sales on pages 3 & 4 of this newsletter.

#### Eden Valley Clearing Sale

On Property Traditional Sale  
Saturday May 24th at 9:30am  
Inspections & Registration from 8:00am

#### Mt Pleasant Multi-Vendor Sale

Online with Farm Clearing Sales  
Monday May 26th at 6:00pm

#### Cuddlee Creek Clearing Sale

Online with Farm Clearing Sales  
Tuesday June 24th at 6:00pm  
More information to come in the next newsletter.

Welcome to our May Newsletter!

Things are still busy at Nutrien Fawcett.

We have a few clearing sales coming up again and the Dolly's Dream Fundraiser Market this month (see details below or check our website). The Variety Bash also have a couple of quiz nights coming up soon, details on the last page of the newsletter so check them out too and if you feel like having a great night out, jump into it and book a table.

If there is something you would like to see in our newsletter, please contact Sam - [samantha.schultz2@nutrien.com.au](mailto:samantha.schultz2@nutrien.com.au)

## NEW MULTI-VENDOR SALE

We are looking for expressions of interest for our next multi-vendor sale to possibly be held in early July.

We have filled our May sale and have begun putting a list together for a July sale.

If you are interested can you please send an email to Sam on the above address or contact one of our agents or office to be added to the list. We will be making contact with the interested parties in mid to late May.

## LONG SERVICE LEAVE

David Schultz (AKA Banger) is still on long service leave across May and June. If you are one of Banger's regular clients and need assistance during this time, give Alan Lintern a call on 0428 508 256 or call the office on 08 8568 2201 and we will get you sorted until he is back on board sometime in July.

Banger has well and truly earned this time off to rest and recuperate so we want to make sure he gets a good break.



## DOLLY'S DREAM FUNDRAISER MARKET



This year Do It For Dolly Day falls on Friday the 9th of May, the day after our market. As we did last year our May market will be held as our Dolly's Dream Fundraiser Market. Raffle tickets are available now at our office, on our website, from Coopers of Mt Pleasant or at the market on either Wednesday or Thursday.

We are calling for donations of livestock to put in one of our Dolly auction pens. This is a cause that we are very proud to get behind and as such, we will be donating three Nutrien branded "Do It For Dolly" blue work shirts to be auctioned off on sale day. We will also be donating all the meat for the sausage sizzles which will be available the day before the market during stock deliveries & on market day after the sheep sale.

We hope you will get behind this great cause, we know times are tough right now, but if you can help out in any way, please let us our office know on 08 8568 2201.



## **DOLLY'S DREAM RAFFLE**

To be drawn on Do It For Dolly Day - Friday May 9th 2025 at 3:00pm

\$2.00 Per Ticket

**1st Prize - Ute load of firewood (\$400 Value)**

Donated by JK & SL Schultz

**2nd Prize - Projecta Intelli-Start Lithium Jumpstarter 1200a (\$260 Value)**

Donated by Coopers of Mt Pleasant

**3rd Prize - Kincrome Portable Automotive Tool Kit 70 Piece (\$200 Value)**

Donated by Coopers of Mt Pleasant

**4th & 5th Prizes - 2 x 1/2 Sides of Hogget cut and tray packed (\$150 Value Each)**

Donated by Laidley Pastoral

**6th Prize - 6 Pack of Mixed Wine**

Donated by K & T McGee

**7th Prize - "Bird in a Sling"**

Donated by The Brown Family

**8th Prize - Carton of Coopers Pale Ale**

Donated by Nutrien Fawcett Mt Pleasant

**9th Prize - Carton of Hahn Superdry 3.5**

Donated by Nutrien Fawcett Mt Pleasant

**10th Prize - Bottle of Robbers Dog Lemoncello**

Donated by Robber's Dog Distillery

**11th Prize - Nutrien Merchandise Pack**

Donated by Nutrien Fawcett Mt Pleasant

More prizes are still coming & this list will be updated as prizes are added!



# MARKET & SALE RESULTS

APRIL 10th MARKET - Sheep, Cattle

**Nutrien**  
Ag Solutions®

FAWCETT LIVESTOCK

CATTLE	Weight Range	Low c/kg	High c/kg	Low \$/hd	High \$/hd
Steers	0-280kg	212	336	\$360.00	\$834.40
	280-400kg	280	346	\$880.60	\$1218.30
	400kg+	250	336	\$1057.91	\$2680.00
Heifers	0-280kg	174	346	\$300.00	\$958.42
	280-400kg	240	310	\$747.60	\$1189.47
	400kg+	240	322	\$1238.19	\$1740.00
Cows	400-500kg	200	310	\$962.00	\$1365.99
	500-600kg	240	290	\$1352.40	\$1680.55
	600kg+	280	305	\$1687.00	\$2223.00
Bulls	0-200kg	-	-	\$100.00	\$450.00
	500kg+	250	270	\$1296.25	\$2381.40
Cows W/CAF	N/A	-	-	-	-

LAMBS	LOW	HIGH
Trade XB Lambs	\$140	\$200
Store XB Lambs	\$80	\$130
Merino Lambs	\$100	\$120
Store Shedding Lambs	\$50	\$145
Trade Shedding Lambs	\$150	\$185
Goats	-	-
HOGGETS/MUTTON		
Breeders	-	-
Hoggets	\$80	\$125
Rams	\$50	\$60
Light Mutton	\$40	\$70
Heavy Mutton	\$80	\$120

## MARKET TRENDS

We are seeing lamb prices improve with processors seeking well finished, heavy trade lambs and good feeder lambs are following suit. Light lambs, below 35kg, are still seeing limited demand and therefore a weakened price.

Hoggets and mutton has had a sizeable increase. Supply has slowed meaning and increased demand which has led way to an increase in pricing for good quality mutton.

There is a similar story for cattle - heavy kill cattle and good quality feeder cattle over 380kg are being met with high demand from feedlots, processors and small butchers. Lighter cattle under 350kg are seeing less demand and this is being reflected in pricing.

We expect after widespread rains finally arrive that this trend will change.

For any advice you may require, please speak to one of our agents:

Ash Fawcett 0439 131 925

Alan Lintern 0428 508 256

## AFTER MARKET EMAILS

So many of our clients are now receiving their reports after a market via email. While this is convenient for all involved, we want to make sure that our clients know if they have any questions about their pricing, or want to know more about the current market prices, you are always welcome and encouraged to give Ashley or David a call to chat about it all. Email is great, but it shouldn't replace a conversation.

### ELECTRONIC TAGS - SHEEP

Remember to advise our staff if your sheep have EID tags when you deliver them to the saleyards. Our scanning equipment is operational in the sheep yards and we are already actively scanning & transferring EID's.

### ELECTRONIC TAGS - CATTLE

Please ensure all cattle coming through the saleyards are tagged with an NLIS registered electronic tag, and that all animals are tagged in their RIGHT ear. Tags in the left ear are against NLIS standards and cause delays in saleyard processing.

### BOOKING IN FOR MARKETS

ALL stock coming into our markets must be booked in with us by close of business on the Tuesday prior to the sale. Booking your stock in is simple, this can be done by phone call or text to any of the agents or office staff, you can email us or fill in the booking form on our website.

We are seeing hundreds of sheep and dozens of cattle coming in without a booking and the numbers for this is growing each market.

Please book your stock in!



# EDEN VALLEY CLEARING SALE

**Nutrien**  
Ag Solutions®  
FAWCETT LIVESTOCK

## TRADITIONAL ON-PROPERTY CLEARING SALE

Saturday May 24th 2025

Sale to commence at 9:30am  
Inspections & Registrations from 8:00am  
(Address to be released 24 hours prior to sale)

Including:

Massey Ferguson 4235 Cab Tractor, 1962 Massey Ferguson Super 90 Tractor, Toyota 40 - 4T Forklift, Hardi 2300L Covermax Computerised Twin-Row Vineyard Sprayer, Suzuki Eiger 400 Quad Runner, Quad Bike Spray Unit, Ute stock crate, 800 HD advantage feeder, 3PL & general farming implements including dozer blade, rotary hoe, spreader etc, firefighting unit, tools, sundries, household items & more.

Number registration system will be in use & photo ID will be required to register.

All payments must be cash or eftpos on the day

All items to be collected on the day (with the exception of the forklift required for loading).

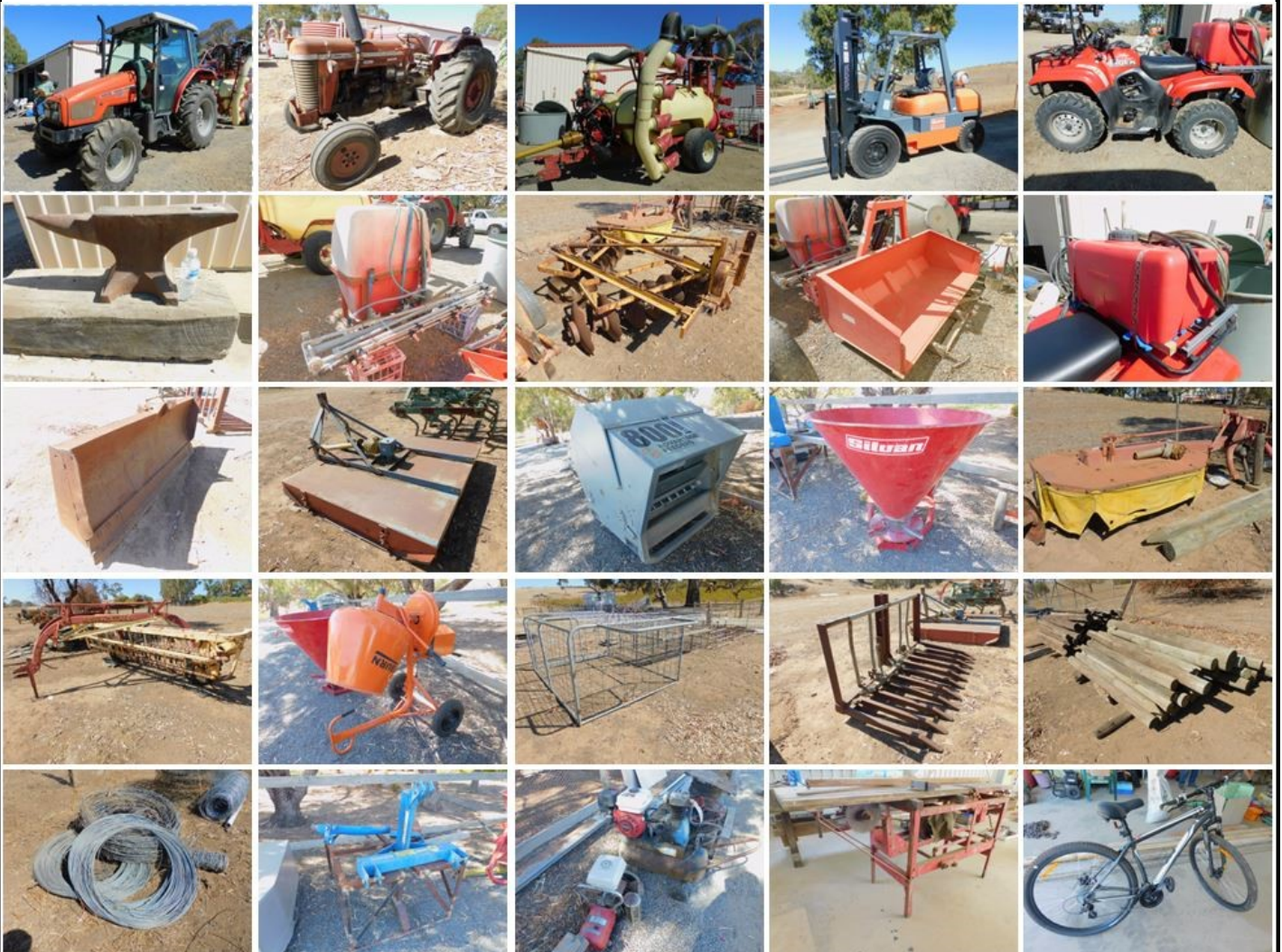
Tractor with forks will be available for loading.

For information please contact our staff:

Ash Fawcett 0439 131 925

Sam Schultz 0417 851 790

Alan Lintern 0428 508 256





**Nutrien**  
Ag Solutions®  
FAWCETT LIVESTOCK

Monday May 26th 2025

Final bidding to commence at 6:00pm  
Inspections and collections by appointment with vendors only.

Multiple Tractors, 2 Deck Cattle Crate, Colorado Ute, 10,000lt Diesel Tank, Hardi Hc550 Rate Controller & Loom, Air Seeder Monitor, Truck Sleeper Cab, Backhoes, Stock Crates, Multiple 3PL Attachments, Welders, Generators, Mitre Saws, Motors, Tyres, Combines, Seeders, Crutching Station, Hay, Cattle Rails, Stock Saddles & Bridle, Workshop tools & accessories, Red Gum Slab, Chainsaws, Pole Saws, Gardening Accessories, household goods & furniture & more!

Pre-bidding live from Thursday 22nd May 2025

Ash Fawcett 0439 131 925

Sam Schultz 0417 851 790

Alan Lintern 0428 508 256





**Nutrien**  
Ag Solutions®  
FAWCETT LIVESTOCK

*Ag Solutions*®



FAWCETT LIVESTOCK

### Essential Equipment rebate (Producers)

- All sheep and farmed goats **born on or after 1 January 2025** must be identified with an NLIS-accredited eID tag before leaving their property of birth.
- **From 1 January 2027** all sheep and farmed goats must be identified with an NLIS-accredited eID tag before leaving their property.
- Note: Device rebate and point of sale discount for white eID tags **ends 30 June 2025**
- A 75% rebate for eligible producers to purchase essential eID equipment to assist satisfying legal responsibilities.
  - ie producers who conduct P2P movements onto their PIC.
- Based on average P2P head count **onto PIC** over 3 years:
  - Up to \$500 for 100 or less animals annually
  - Up to \$2000 for 101 – 5000 animals annually
  - Up to \$20,000 for for than 5000 animals annually
- **Applications close 30 June 2025**

Discount on white EID tags also ends on June 30 2025

## ‘Double tagging’

- eID tags must be NLIS accredited. NLIS accredited tags have gone through a strict 3-year accreditation process testing retention and readability.
  - Correct tag application and hygiene is critical for tag retention. Producers must follow manufacturers tagging recommendations. Issues to be reported to ISC or tag manufacturer.
  - Only NLIS accredited eID tags will be uploaded to the producers' PIC on the NLIS database by the manufacturer at time of sale
  - Non accredited eID tags are not recorded on the NLIS database and have no traceability benefit.
  - eID tags are also species specific – make sure producers order for the correct species (sheep or goats).
- 

- From 1 January 2027...

  - All sheep and goats must have an NLIS accredited eID tag before leaving the property.
  - Animals that have a visual NLIS tag must be retagged with a NLIS accredited eID tag (either a breeder or post breeder tag – depending on the circumstance) **before leaving the property.** (These will be older animals that were born prior to the introduction of sheep and goat eID).
  - An eID tag will have a long number printed on the outside of the tag – a visual tag will only have a PIC.
 

S	A	1	2	3	4	5	6	L	S	U	3	0	0	1
---	---	---	---	---	---	---	---	---	---	---	---	---	---	---
  - Visual tags should not be removed when applying the eID device.
  - Sheep and goats must only be tagged with one eID device. Non-accredited eID tags must be removed and an accredited eID tag applied before leaving the property.

➤ From 1 January 2027...

  - All sheep and goats must have an NLIS accredited eID tag before leaving the property.
  - Animals that have a visual NLIS tag must be retagged with a NLIS accredited eID tag (either a breeder or post breeder tag – depending on the circumstance) **before leaving the property.** (These will be older animals that were born prior to the introduction of sheep and goat eID).
  - An eID tag will have a long number printed on the outside of the tag – a visual tag will only have a PIC.
 

S	A	1	2	3	4	5	6	L	S	U	3	0	0	1
---	---	---	---	---	---	---	---	---	---	---	---	---	---	---
  - Visual tags should not be removed when applying the eID device.
  - Sheep and goats must only be tagged with one eID device. Non-accredited eID tags must be removed and an accredited eID tag applied before leaving the property.



- Only the 8 colours in the year of birth (YOB) system are NLIS accredited. However, following the year colours in set sequence is voluntary in SA.
- Other colours, such as brown and grey are not YOB colours, are not NLIS accredited. These tags are not registered to your PIC on the database. These tags have no NLIS traceability benefit.
- eID tags are either breeder tags (can any colour in the YOB rainbow) or post breeder tags (must be pink).
- Lost eID tags
  - An eID post breeder tag will need to be applied to an animal that has moved onto the property but has lost its original breeder eID tag ie if a non-vendor bred animal has lost its tag.
  - A new eID breeder tag can be applied if an animal that was born on your property (ie vendor bred) loses its original eID breeder device. This can be any colour tag other than Pink.
- Left over eID tags can be used in any following year. They don't have to be used in the year that they were bought or manufactured.

Year		Colour	Pink tag = post-breeder tags must be pink
2019	2027	Light Green	
2020	2028	Purple	
2021	2029	Yellow	
2022	2030	Red	
2023	2031	Sky Blue	
2024	2032	Black	
2025	2033	White	
2026	2034	Orange	



Government  
South Australia  
Department of Primary  
Industries and Regional

# NUTRIEN WOOL

**Nutrien**  
Ag Solutions®  
FAWCETT LIVESTOCK

## WOOL MARKET MOVEMENTS

EMI 1,232 c/kg clean ↓ 30 cents.

Subdued demand as buyers reacted to currency movements and picked through the offering particularly on day 1 with all sectors affected. Unsurprisingly pass-in rates jumped up, especially among the Merino fleece sector. The market settled on day 2. Buyers continue to seek out stylish lots with few faults and favourable additional measurements. These are more difficult to find as dry conditions continue in many wool producing regions.

National offering - 42,214 bales ↑ 8,046 bales.

National pass in rate - 17.0% ↑ 12.0%.

No sales next week due to the Easter recess. Sales resume in week 44 (week beginning 28 April) with 40,044 bales expected to be offered for sale.

Southern Melbourne (Tuesday & Wednesday)

- Merino fleece - Inferiortypes fell away on day 1 as quality finer (≤ 18 µm) lots dipped slightly. Day 2 produced discounts for poorer style and unfavourable additional measurements and high pass in rates.

- Merino Skirtings - Lower yielding lots and those carrying higher VM lost up to 60 cents.

- Crossbred - Stylish, well-prepared lots with low (<23%) CVD were least affected as the sector weakened.

- Oddments - Yield and style impacted value prices eased.

Southern Regional Indicator - 1,205 c/kg clean ↓ 32 cents.

Southern Merino Carding Indicator - 732n c/kg clean ↓ 19 cents.

Melbourne's pass in rate 17.3% with 868 bales withdrawn.

## AWEX WEEKLY WOOL PRICES FOR MARCH

Regional	Wk End 4/4	Wkly Chg	Wk End 11/4	Wkly Chg	Wk End 18/4	Wkly Chg	Wk End 25/4	Wkly Chg
c/kg clean	1223	+3	1237	+14	1205	-32	-	-

## MICRON PRICE GUIDES

16.5	1778	-10	1810	+32	1748	-62	R E C E S S
17	1705	-10	1731	+26	1678	-53	
17.5	1665	-2	1683	+18	1635	-48	
18	1627	+7	1643	+16	1613	-30	
18.5	1584	-8	1612	+28	1572	-40	
19	1552	0	1570	+18	1540	-30	
19.5	1524	-4	1539	+15	1510	-29	
20	1509	-1	1519	+10	1484	-35	
21	1491	-5	1510	+19	1465	-45	
22	1488	-	1500	-	-	-	
23	1454n	-	1479n	-	-	-	
24	-	-	-	-	-	-	
25	730	-	778n	-	730n	-	
26	622	+7	620n	-2	604	-16	
28	445	+8	460	+15	440	-20	
30	380n	+3	388n	+8	363	-25	
32	335	+10	338n	+3	335	-3	
MC	745	-1	751	+6	732n	-19	

## CURRENT AS AT END APRIL 2025:

### UPCOMING AUCTION VOLUMES

	22/04/2025	29/04/2025	6/05/2025
Northern	S43	S44	S44
Sydney	RECESS	11,072	to be advised
Southern	M43	M44	M44
Melbourne	RECESS	21,722	to be advised
Western	F43	F44	F44
Fremantle	RECESS	7,250	to be advised
Total	RECESS	40,044	to be advised

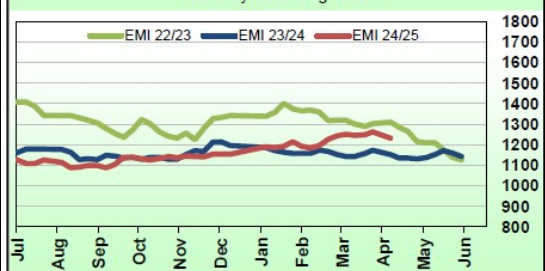
### Mulesing Status P/D's

Micron	Non Mulsed	Pain Relief
18	+60	+2
19	+40	+5
20	+30	+3
21	na	na
23	na	na
25	+10	na

Mulesing P/D's quoted by AWEX.

### AWEX EMI 2020/21 & 2021/22 Seasons vs Current

Currently: 1232 c/kg clean



Micron	EMI	16.5	17	17.5	18	18.5	19	19.5	20	21	22	23	25	28	AUD
Current MPG's	1232	1758	1689	1642	1614	1577	1538	1515	1487	1465	-	-	730	440	0.634
10 year Average	1322	1996	1901	1818	1727	1643	1569	1511	1461	1422	1394	1367	1015	643	0.765
This time last year	1158	1819	1713	1627	1556	1477	1435	1394	1363	1322	1309	-	-	362	0.642
10 year High	2116	3187	3007	2831	2683	2569	2462	2414	2391	2371	2350	2308	1828	1323	1.058
10 year Low	858	1267	1216	1177	1140	1060	997	947	905	884	863	953	668	303	0.557
% Reported above current	56%	60%	57%	54%	49%	47%	46%	37%	30%	27%	0%	0%	87%	71%	97%
Diff b/w High & Current	884	1430	1318	1189	1069	992	925	899	904	906	-	-	1098	883	0.424
Diff b/w Ave & Current	-90	-238	-212	-176	-113	-66	-31	4	26	43	-	-	-285	-203	-0.131

If you have any questions about the information above or have wool to sell, please contact your local Nutrien Wool representative Paul Burgemeister on 0408 844 856.

**Nutrien**  
Wool

Nutrien Wool

12 William Street, Mt Pleasant  
8:00am to 4:00pm every Friday



# FOOTY TIPPING

Ash has taken the lead! A few upsets have meant a couple rounds without a margin winner. What does the next month have in store?

Green Number = Round High Score

Orange Square = Margin Winner

NAME	Round 4		Round 5		Round 6		Round 7	
Ashley Fawcett	7	28	7	35	5	40	7	47
Brett Thomas	4	19	6	25	3	28	5	33
Colin Fawcett	6	24	5	29	4	33	6	39
David Schultz	6	26	6	32	5	37	5	42
Richard Inwood	5	17	7	24	7	31	3	34
Rob Lindner	7	25	6	31	6	37	6	43
Rosie Schultz	5	27	6	33	5	38	7	45
Sam Schultz	5	24	7	31	4	35	8	43

## APRIL RAINFALL

Angaston	3.0mm	Mount Pleasant	15.6mm
Birdwood	15.6mm	Mount Torrens	17.0mm
Cromer	14.2mm	Nuriootpa	7.0mm
Gumeracha	21.5mm	Palmer	4.8mm
Harrogate	7.0mm	Sedan	0.2mm
Kersbrook	15.0mm	Shea-Oak Log	5.4mm
Keyneton	2.4mm	Swan Reach	0.0mm
Lobethal	11.4mm	Tanunda	9.4mm
Mount Crawford	13.8mm	Williamstown	10.8mm

Source: <http://www.bom.gov.au/climate/rainfall/>

## VARIETY QUIZ NIGHTS

\$10 Per Person, Tables of up to 8 people.

Coonalpyn - Saturday May 17th 2025 - Coonalpyn Bowling Club at 7:00pm - To book call Garry Fawcett 0429 556 347

Mt Pleasant - Saturday June 21st 2025 - Mt Pleasant Hall at 7:00pm - To book call Sam Schultz 0417 851 790

## CONTACT US:

Phone: 08 8568 2201

Email: [landmark.fawcett@bigpond.com](mailto:landmark.fawcett@bigpond.com)

Website: [www.nutrienmtpleasant.com.au](http://www.nutrienmtpleasant.com.au)

**ASHLEY  
FAWCETT**

Ph: 0439 131 925  
E: [ashley.fawcett@nutrien.com.au](mailto:ashley.fawcett@nutrien.com.au)

**DAVID  
SCHULTZ**

Ph: 0408 816 943  
E: [david.schultz@nutrien.com.au](mailto:david.schultz@nutrien.com.au)

**ALAN  
LINTERN**

Ph: 0428 508 256  
E: [alan.lintern@nutrien.com.au](mailto:alan.lintern@nutrien.com.au)